



**POOLE HARBOUR COMMISSIONERS**  
**LOCAL NOTICE TO MARINERS**  
**POOLE HARBOUR**

No. 24/2015

10<sup>th</sup> June 2015

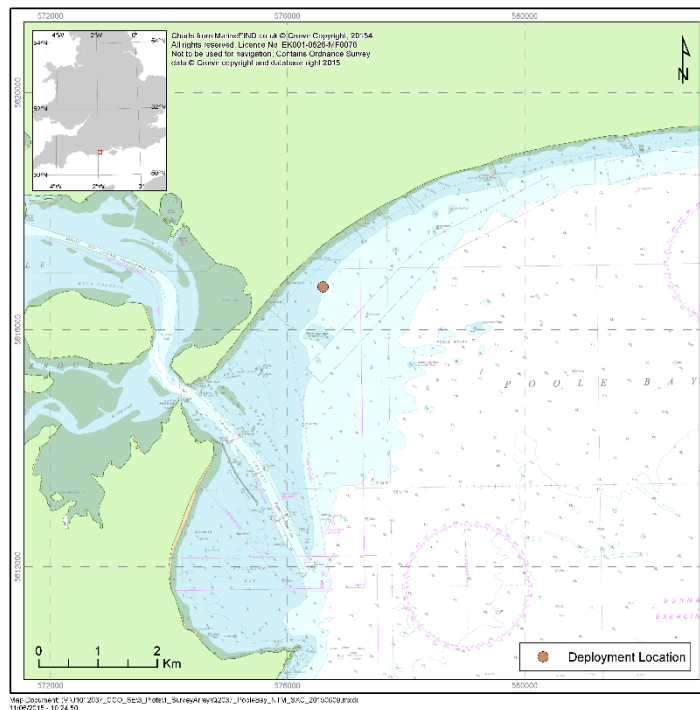
**Notice of Marine Operations**  
**South Coast of England**

**LOCAL NOTICE TO MARINERS 2015/23 IS DULY AMENDED SEE BELOW**

**Issue of Notice of Marine Operations for relocation of seabed frame and Surface Marker Buoy (SMB)**  
**in Poole Bay for South Coast Strategic Regional Coastal Monitoring Programme**

Notice is hereby given that Fugro EMU Limited intends to relocate a sea bed frame with associated moorings and surface marker buoy (SMB) to the following location in the Poole Bay area (Figure 1). This equipment has been deployed in the nearby area since November 2014 and will remain in situ at its new location until November 2015.

Station	LATITUDE	LONGITUDE
Poole Bay	50°41.839' N	001°54.922' W

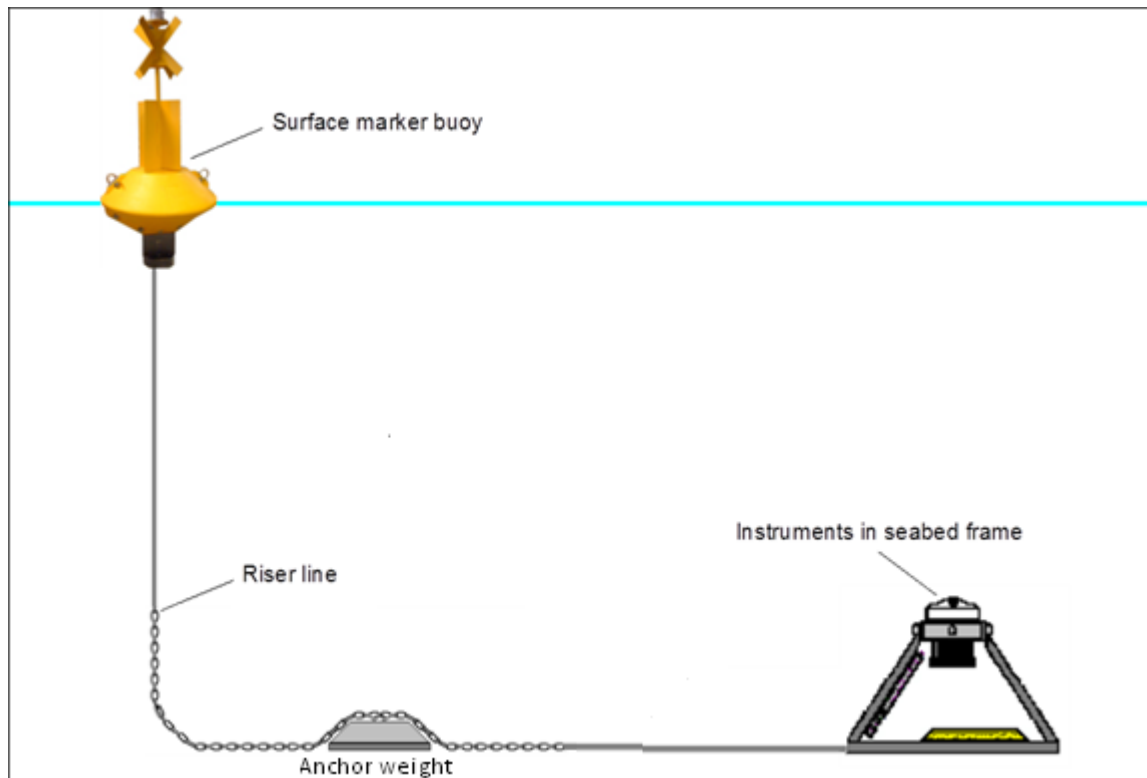


**HARBOUR OFFICE - 20 New Quay Road, Hamworthy, Poole, Dorset, BH15 4AF**  
**Telephone: (01202) 440210 Fax: (01202) 440231 e-mail:harbourmaster@phc.co.uk**

**POOLE HARBOUR COMMISSIONERS**  
**LOCAL NOTICE TO MARINERS**  
**POOLE HARBOUR**

**Figure 1: Deployment relocation for seabed frame**

The SMB is 1.25 m in diameter, 1.5 m in height and is IALA yellow in colour. The SMB is also equipped with a flashing amber navigational light (flashing 5 times every 20 seconds at 1 Hz) and radar reflectors. The buoy will be moored with a chain riser line attached to an anchor weight. From the anchor weight, a chain ground line leads across the seabed and is attached at the other end to a seabed frame. This frame houses scientific monitoring equipment for the collection of wave, tide, current and turbidity data. Please note the seabed frame is not beneath the SMB but approximately 60 m from it (please refer to attached L-shaped mooring diagram Figure 2).



**Figure 2: L-shaped mooring diagram**

Mariners are requested to give at least a 200 m clearance from this deployment to avoid danger of entanglement or damage to vessels and equipment.

If you have any questions or comments please contact Fugro EMU's MetOcean Department on 02392 205 510, or email: [oceanography@fugroemu.com](mailto:oceanography@fugroemu.com).



**POOLE HARBOUR COMMISSIONERS**  
**LOCAL NOTICE TO MARINERS**  
**POOLE HARBOUR**

Should you have any queries please contact:-



**Fugro EMU**  
Unit 16  
Trafalgar Wharf  
Hamilton Road  
Portchester  
Hampshire  
PO6 4PX  
Tel: (023) 9220 5510  
Fax: (023) 9220 5555  
Email: [oceanography@fugroemu.com](mailto:oceanography@fugroemu.com)  
Web Site: [www.fugroemu.com](http://www.fugroemu.com)

**Mariners are advised to maintain a listening watch on VHF Channel 14 when in Poole Harbour.**

**Mariners are reminded that Radar, AIS, CCTV, telephone and VHF channels are recorded.**

**Captain B P Murphy**  
**Harbour Master**

ALL LOCAL NOTICES TO MARINERS ARE AVAILABLE ON THE PHC WEBSITE: [www.phc.co.uk](http://www.phc.co.uk)

HARBOUR OFFICE - 20 New Quay Road, Hamworthy, Poole, Dorset, BH15 4AF  
Telephone: (01202) 440210 Fax: (01202) 440231 e-mail: [harbourmaster@phc.co.uk](mailto:harbourmaster@phc.co.uk)