



POOLE HARBOUR COMMISSIONERS
LOCAL NOTICE TO MARINERS
POOLE HARBOUR

No. 11/2016

28th April 2016

BOURNEMOUTH BEACH MANAGEMENT SCHEME

MMO Licence Number L/2015/00331/1

This Local Notice to Mariners is issued on behalf of Bournemouth Borough Council

THIS LNTM REPLACES LNTM 10/2016

Notice is hereby given that work to replenish the beach at Bournemouth is scheduled to commence on 2nd March 2016 and be completed by early May 2016 (including demobilisation of sinker). Renourishment material will be dredged from area 137 (SW of the Isle of Wight), and transported to site by a Trailing Suction Hopper Dredger (TSHD) named the Volvox Olympia. A total of 3 areas of beach between Bournemouth Pier and Southbourne will be filled with a combined total of 320,000 m³ of material.

Altogether 3 pipeline positions are required to pump material onshore to each location via a 650m sinker pipeline, with pipeline moves occurring sequentially from W to E. The delimited vessel routes and pipeline locations are appended to this Notice. Each sinker pipeline will require a minimum of 20m corridor allowance (10m either side of centreline of 800mm diameter pipeline) during each pipe move, within which all vessels and fishing gear are requested to keep clear at all times during the execution of the project.

The work will consist of:

- Incoming delivery of partially pre-assembled pipeline by multi-tug or similar, with the pipe being delivered within the delimited zones as attached to this Notice
- Support vessels and equipment will receive and install the floating and sinker sections on arrival.
- The sinker pipeline will be assisted to its shore position in a N-S orientation.
- TSHD (dredger) transit routes are marked on the drawings attached to this Notice. An inshore corridor of 200m has been allowed for the dredge vessel to manoeuvre.

As part of the operation, two lit marker buoys (Quick Flash Yellow) will be laid at two positions (See attached):

	Lat DMS	Lon DMS	Lat DDM	Lon DDM
Marker Position 1	50°42'25"	1°52'15"	50°42.416'N	001°52.250'W
Marker Position 2	50°42'39"	1°50'27"	50°42.650'N	001°50.450'W

HARBOUR OFFICE - 20 New Quay Road, Hamworthy, Poole, Dorset, BH15 4AF
Telephone: (01202) 440210 Fax: (01202) 440231 e-mail:harbourmaster@phc.co.uk



POOLE HARBOUR COMMISSIONERS
LOCAL NOTICE TO MARINERS
POOLE HARBOUR

The onshore and offshore coordinates (WGS84) and movement dates for the sinker pipeline are detailed in the table below (dates are subject to weather and progress):

Location	Lat (DDM)	Lon (DDM)	Date In	Date Out
Sinker 1 Offshore	50°42.76722'N	001°51.27468'W	13-Mar	25-Mar
Sinker 1 Onshore	50°43.10487'N	001°51.36622'W		
Sinker 2 Offshore	50°42.87600'N	001°49.87962'W	25-Mar	18-Apr
Sinker 2 Onshore	50°43.21657'N	001°49.93850'W		
Sinker 3 Offshore	50°42.88450'N	001°48.58378'W	18-Apr	3 rd to 9 th May
Sinker 3 Onshore	50°43.22694'N	001°48.56631'W		

The potential inshore transit route zone to Location 3 is bounded by the coordinates:

	Lat (DDM)	Lon (DDM)
Point A	50°42.9'N	001°48.72'W
Point B	50°42.9'N	001°48.42'W
Point C	50°42.0'N	001°49.0'W

	Lat (DDM)	Lon (DDM)
Point D	50°42.0'N	001°48.72'W
Point E	50°41.26'N	001°49.22'W
Point F	50°41.26'N	001°48.93'W

Pumping works and dredger movements were completed on Sun 24th April. To demobilise the 650m sinker pipeline from the final location (Location 3), the pipeline will be re-floated and left for 24hrs in its current position, and disconnected from the shorter floating rubber section. The floating rubber section will be anchored alongside the refloated sinker section for the 24hrs with a vessel moored nearby, before both sections are towed offshore separately via the transit route to Location 3 (demarcated by the points by A-F) between Tuesday 3rd and Monday 9th May 2016 (highly weather dependent), with the assistance of 3 vessels. The multicat Nero will tow the floated longer sinking section. The rubber floating section will be towed by the Martina P multicat, with the GPS Battler tug following at the rear.

Mariners are advised to keep well clear at all times of the above areas and to keep a good look-out and navigate with caution when in the vicinity of the works.

For further information please contact Bournemouth Borough Council on: Tel. No: 01202 454605 (office hours only).

Mariners are reminded that Radar, AIS, CCTV, telephone and VHF channels are recorded.

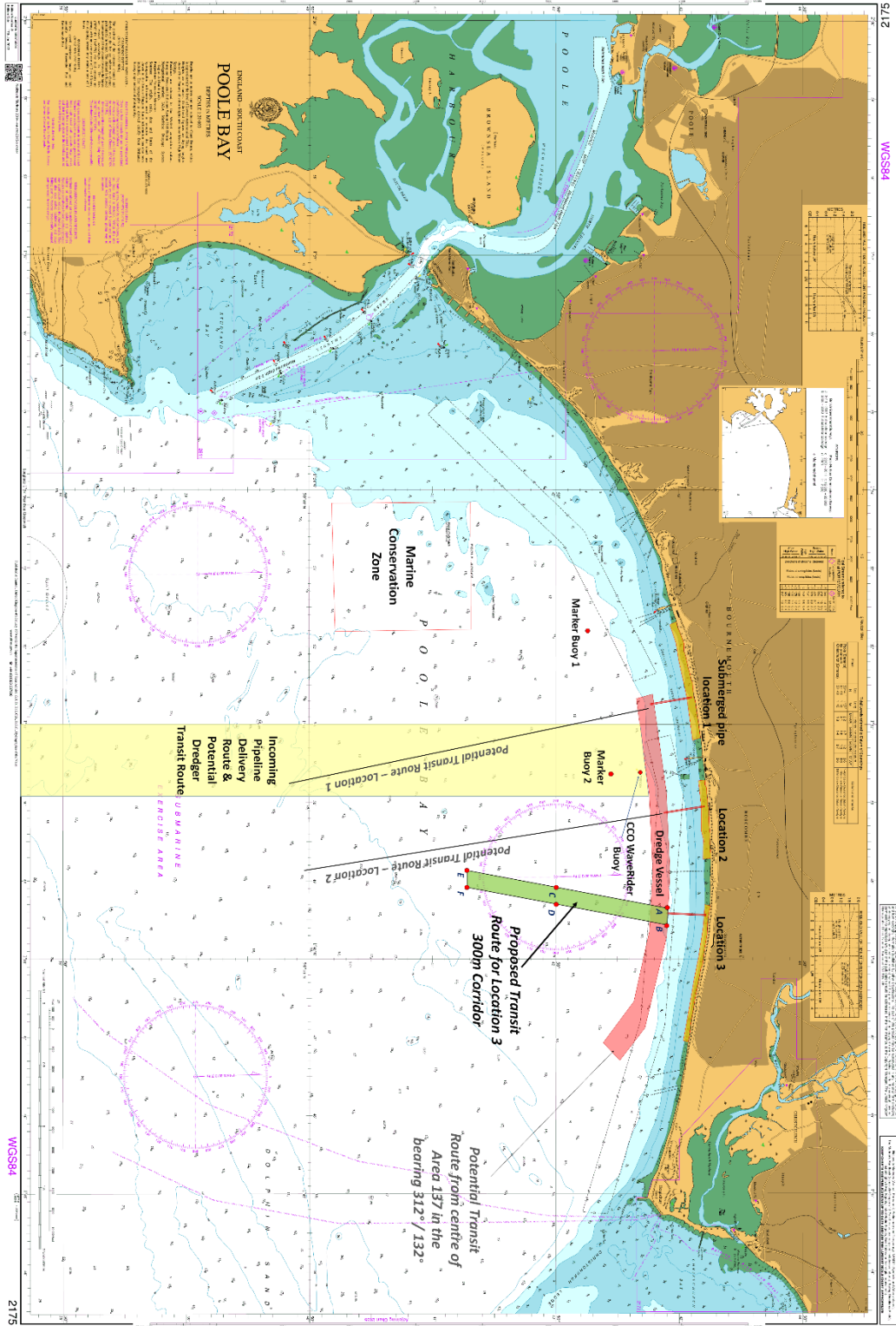
Captain B P Murphy
Harbour Master

ALL LOCAL NOTICES TO MARINERS ARE AVAILABLE ON THE WEBSITE: www.phc.co.uk

HARBOUR OFFICE - 20 New Quay Road, Hamworthy, Poole, Dorset, BH15 4AF
Telephone: (01202) 440210 Fax: (01202) 440231 e-mail:harbourmaster@phc.co.uk



POOLE HARBOUR COMMISSIONERS
LOCAL NOTICE TO MARINERS
POOLE HARBOUR



HARBOUR OFFICE - 20 New Quay Road, Hamworthy, Poole, Dorset, BH15 4AF
Telephone: (01202) 440210 Fax: (01202) 440231 e-mail:harbourmaster@phc.co.uk

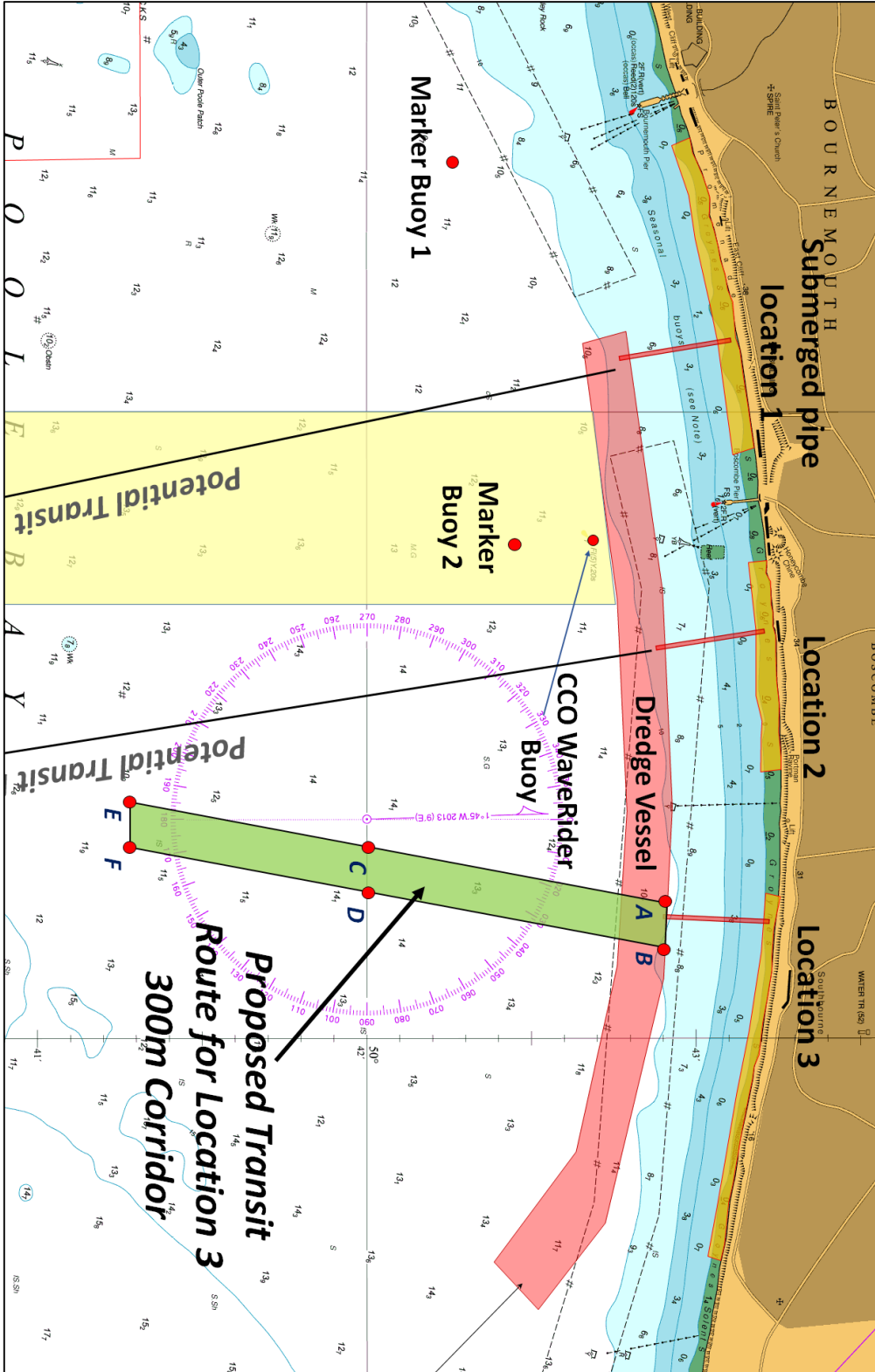


POOLE HARBOUR COMMISSIONERS
LOCAL NOTICE TO MARINERS
POOLE HARBOUR

HARBOUR OFFICE - 20 New Quay Road, Hamworthy, Poole, Dorset, BH15 4AF
Telephone: (01202) 440210 Fax: (01202) 440231 e-mail:harbourmaster@phc.co.uk



POOLE HARBOUR COMMISSIONERS
LOCAL NOTICE TO MARINERS
POOLE HARBOUR



HARBOUR OFFICE - 20 New Quay Road, Hamworthy, Poole, Dorset, BH15 4AF
Telephone: (01202) 440210 Fax: (01202) 440231 e-mail:harbourmaster@phc.co.uk