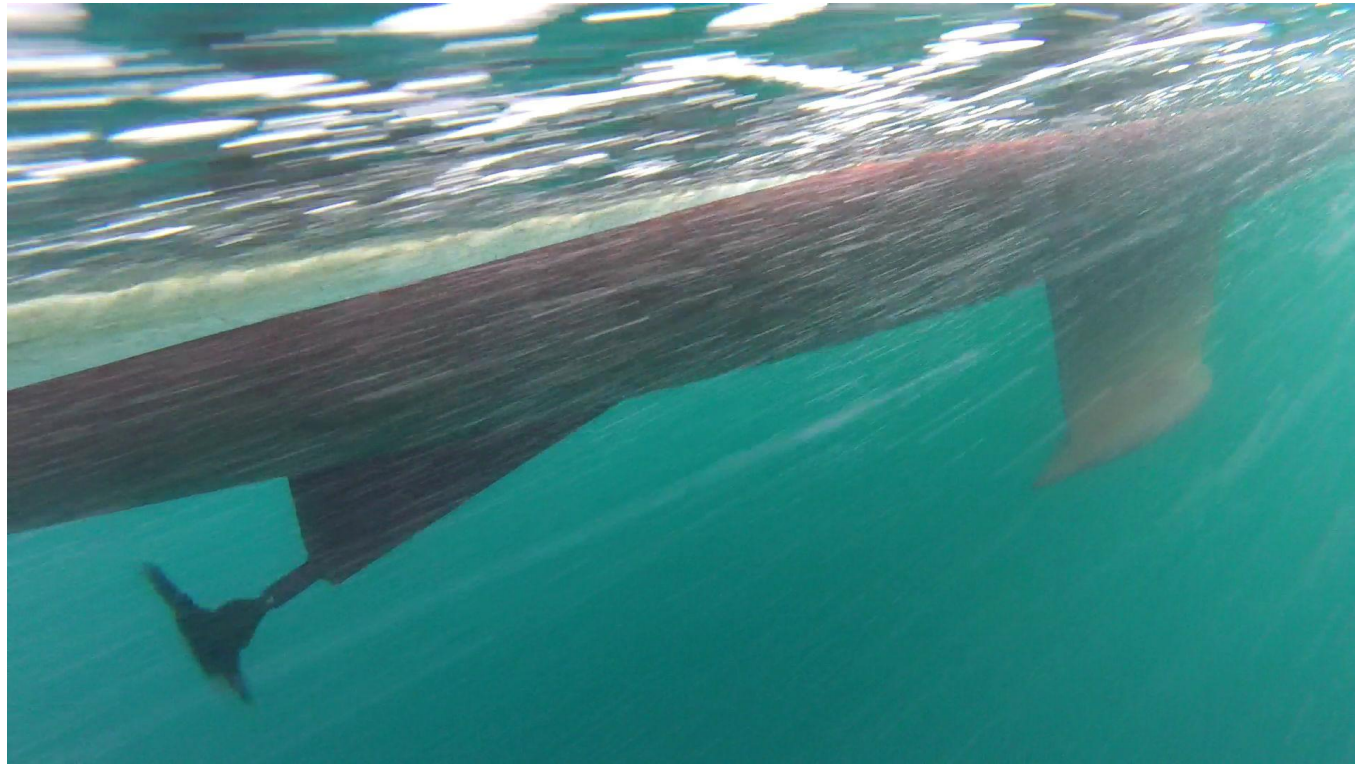


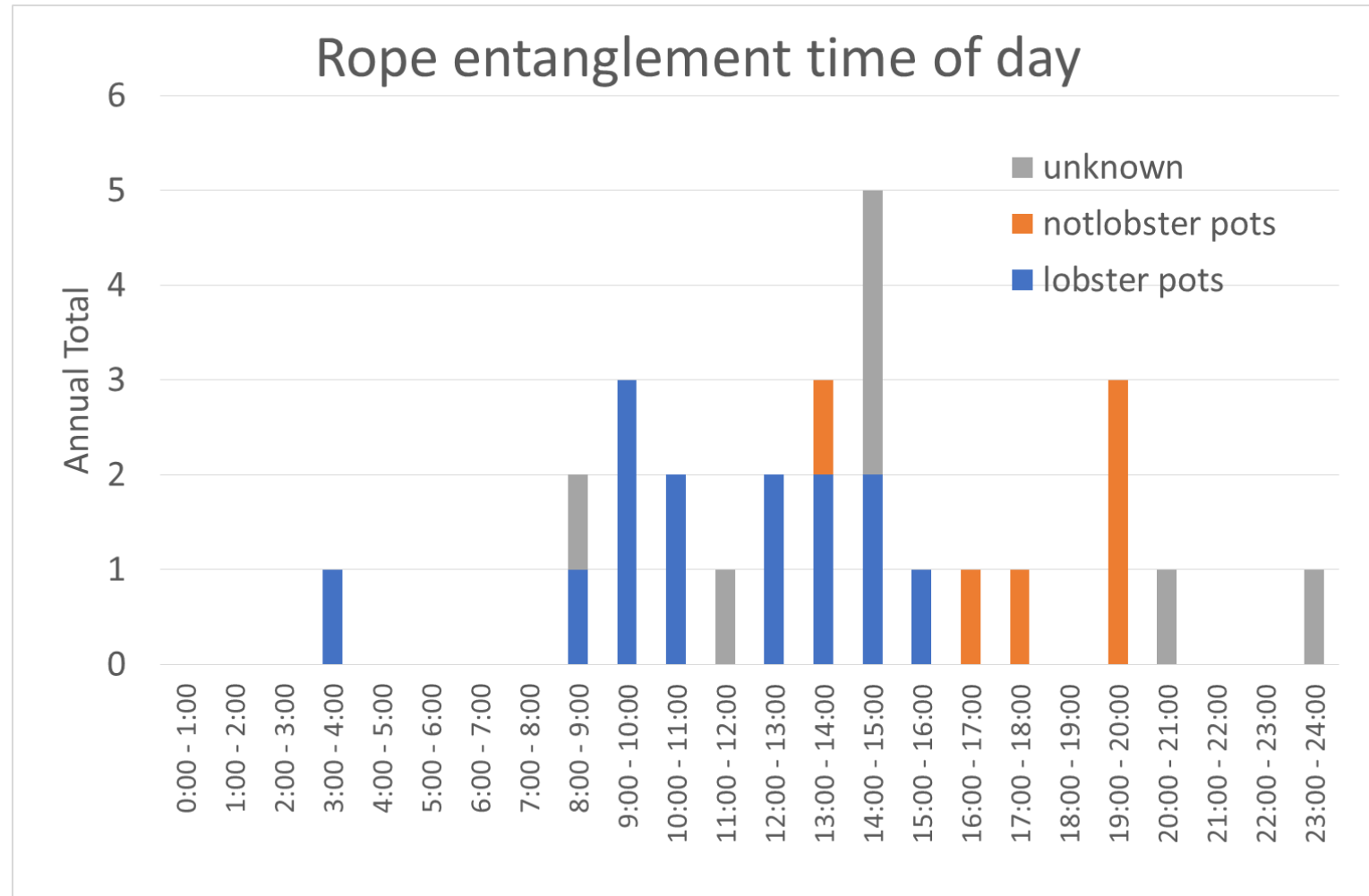
# Rope Entanglement

Swanage Community Safety Incident Analysis



# Date and Time when boats became entangled

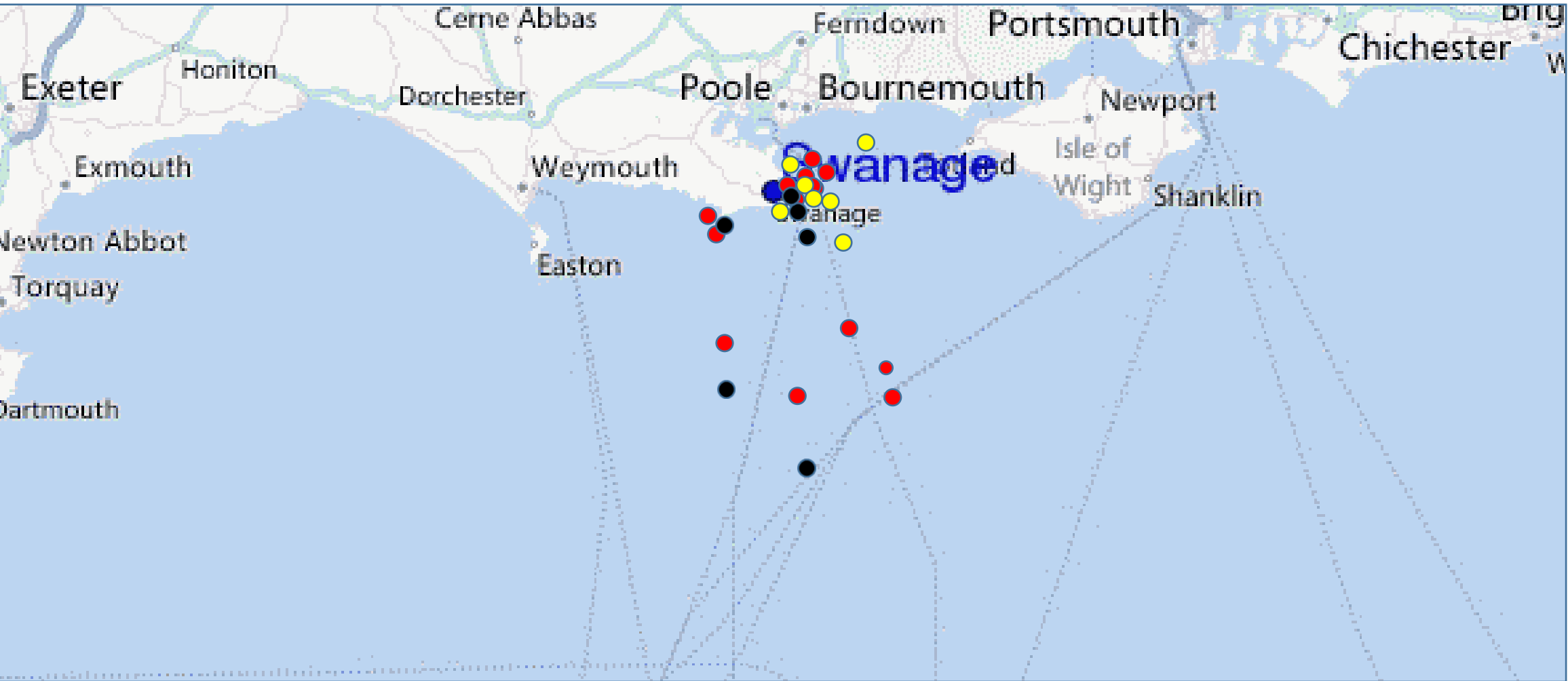
date	time1
21st June 2012	19:24:00
13th October 2012	14:50:00
20th April 2013	13:26:00
6th August 2013	15:43:00
28th September 2013	14:37:00
7th April 2014	20:38:00
24th April 2014	14:37:00
20th May 2014	10:00:00
25th May 2014	16:09:00
21st July 2014	12:57:00
21st May 2015	09:54:00
5th July 2015	11:50:00
7th August 2015	10:27:00
30th April 2016	08:15:00
3rd July 2016	14:50:00
1st August 2016	19:10:00
29th August 2016	12:09:00
28th October 2016	13:48:00
30th October 2016	09:55:00
16th April 2017	23:06:00
24th May 2017	17:19:00
18th June 2017	19:51:00
2nd July 2017	14:31:00
4th July 2017	03:27:00
11th July 2017	13:59:00
14th July 2017	08:45:00
30th August 2017	09:25:00



# Incident Location <sup>★</sup>

Key:-

- = Lobster Pot
- = Not Lobster Pot
- = Unknown



— = 10 miles



# Rope Entanglement

- *As has already been mentioned, the high instance of yachts getting entangled in lobster pots in and around Swanage, well the Community Safety Team in Swanage have taken 27 incidents of Rope Entanglement and been looking at where and when sailors get caught out. I say sailors because its almost an exclusive problem of yachts rather than motor boats in those cases we analysed.*
- *In terms of position, all but 8 of those we looked at occurred within less than 4 miles of the coast and most off Old Harry/Ballard, Peveril Ledge/Anvil Point and St Alban's Head. What's more it was during daytime that these yachts were getting tangled up in lobster pots - all but one between 8 in the morning and 4 in the afternoon!*
- *So, the simple message is that if you, like us, would rather you didn't feature in future statistics, then you need to keep a particularly keen eye out for pots when making passage in the areas listed above.*
- *The next exercise is to plot tidal information against the 27 dates and times that these incidents occurred, if any member would like to help us on this and they hoard their old almanacs (by extracting the state of the Swanage tide from HW Dover over a period from 2012) then please get in touch. It has been suggested that most rope entanglements with lobster pots occur at slack low water and we are keen to test this theory out.*
- Gary Richardson
- Swanage RNLI
- Community Safety Officer